



19 Stratton Gardens, Luton, LU2 7DS

Situated on the highly sought after Stratton Gardens in the prestigious Old Bedford Road area of Luton, this immaculate and substantially extended five bedroom detached family home offers an abundance of living space, making it the perfect choice for a growing family seeking both comfort and flexibility.

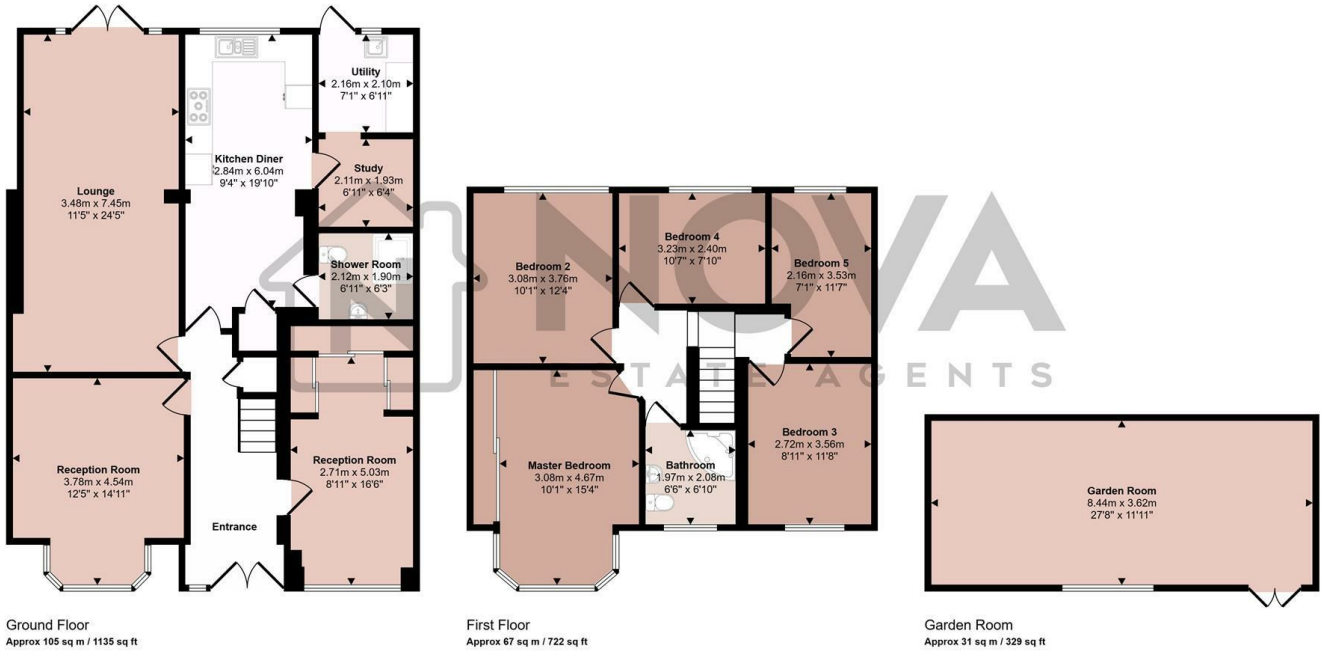
Beautifully presented throughout, the property boasts three spacious reception rooms, providing versatile accommodation for family living, entertaining and relaxation. At the heart of the home is a large kitchen/diner, complemented by a separate utility room and a dedicated home office, ideal for modern family life and remote working. Finishing off the downstairs is a downstairs shower room.

The first floor offers five well-proportioned bedrooms and a fully fitted family bathroom, ensuring ample space for larger families.

- Nova Estate Agents
- Press Play Button For 360° Walkaround Tour
- Old Bedford Road Area
- 5 Bedroom & 3 Reception Rooms
- Immaculately Extended Home
- Downstairs Shower Room
- Utility Room, Office & Very Large Outhouse
- Parking for Multiple Cars
- Close To Schools and Parks

£625,000

Approx Gross Internal Area
203 sq m / 2185 sq ft



This floorplan is only for illustrative purposes and is not to scale. Measurements of rooms, doors, windows, and any items are approximate and no responsibility is taken for any error, omission or mis-statement. Icons of items such as bathroom suites are representations only and may not look like the real items. Made with Made Snappy 360.

Energy Efficiency Rating		
	Current	Potential
<i>Very energy efficient - lower running costs</i>		
(92 plus) A		
(81-91) B		
(69-80) C		
(55-68) D		
(39-54) E		
(21-38) F		
(1-20) G		
<i>Not energy efficient - higher running costs</i>		
England & Wales	EU Directive 2002/91/EC	